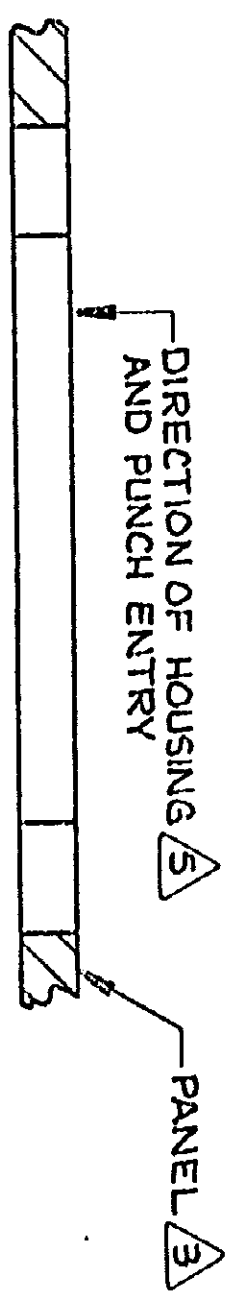
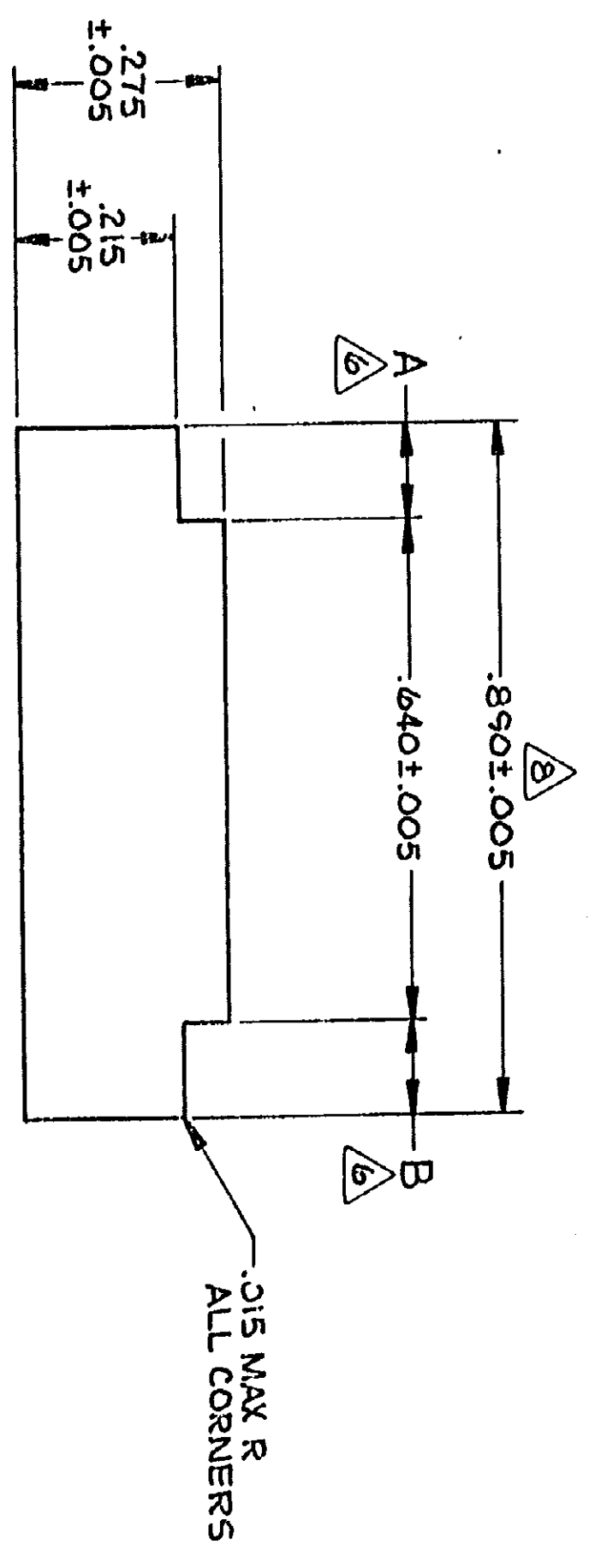
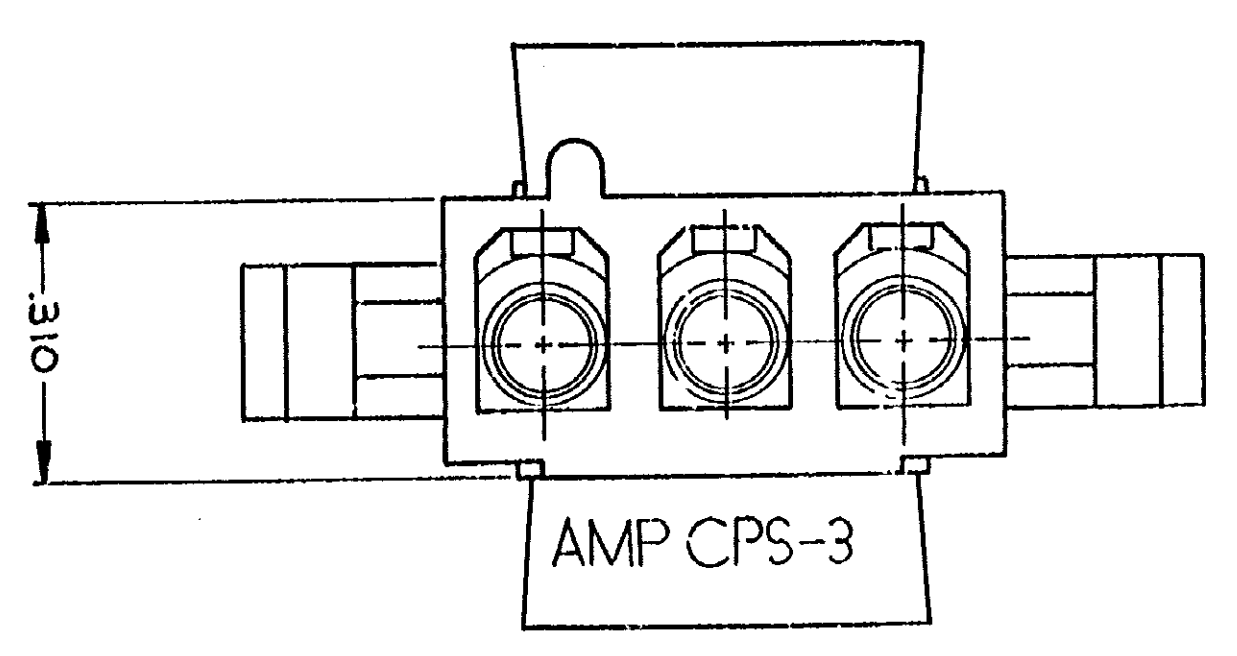
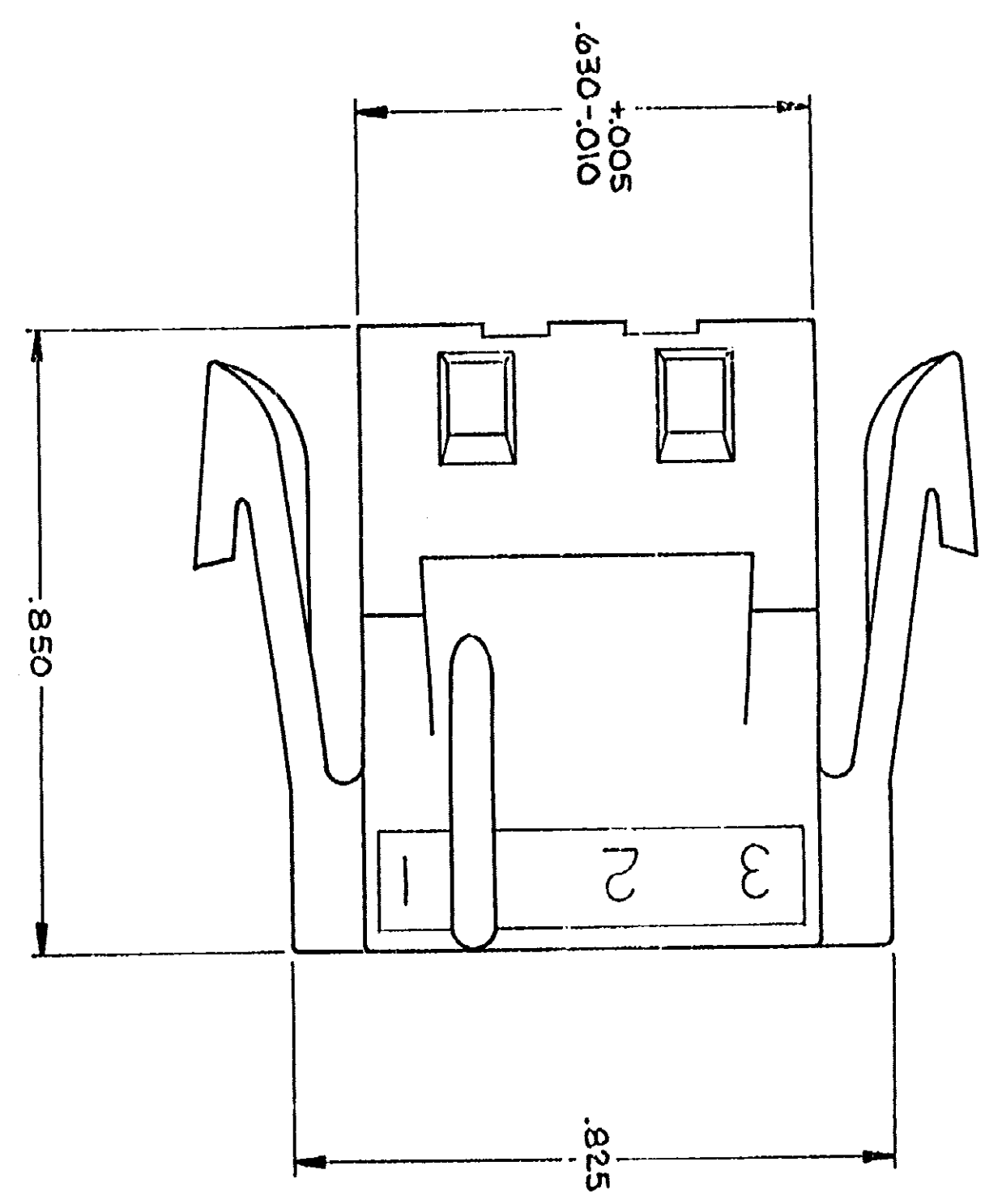
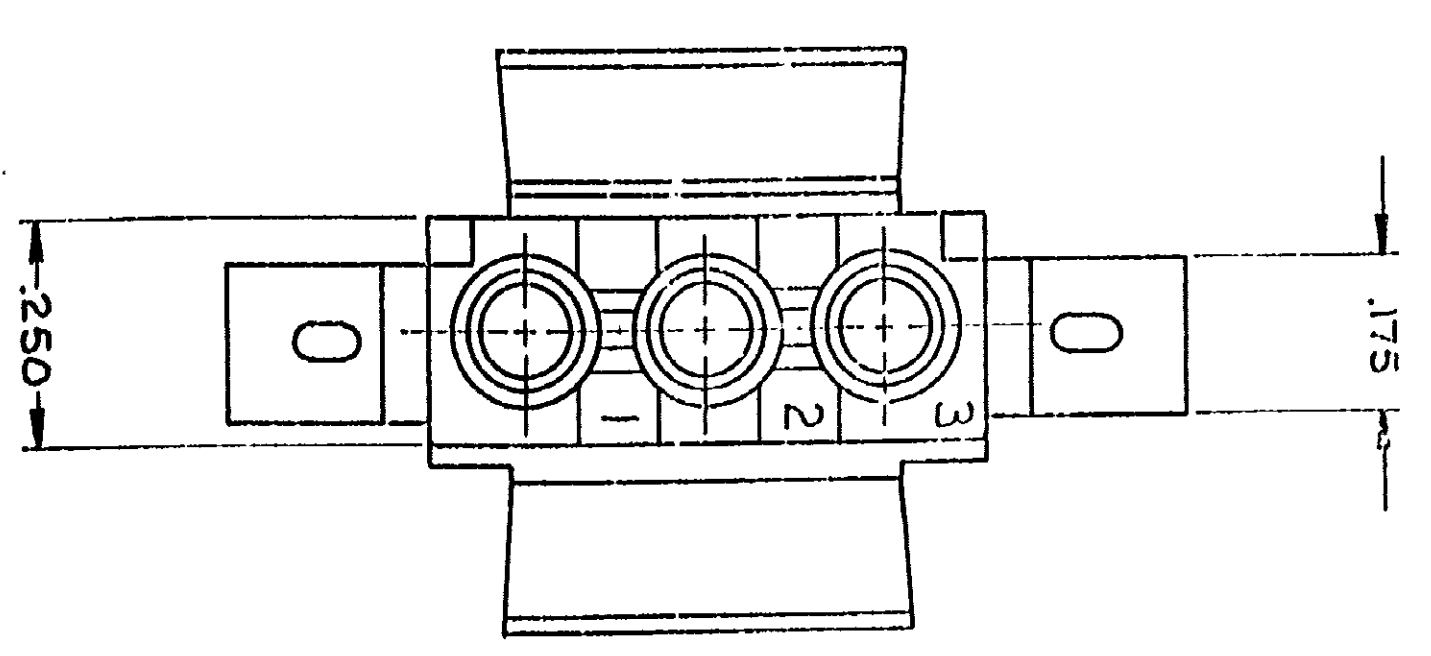


DRAWING MADE IN THIRD ANGLE PROJECTION
 RELEASED FOR PUBLICATION
 BY AMP INCORPORATED, PHILADELPHIA, PA. ALL INTERNATIONAL RIGHTS RESERVED. AMP PRODUCTS MAY BE COVERED BY U.S. AND FOREIGN PATENTS AND/OR PATENTS PENDING.



REV.	DATE	APPROVED	DESCRIPTION
1	5-30-86	MJ/res	OBsolete 1-2, 1-5, 1-7, 1-8 PER CM-473. REVISED AND REDRAWN PER CM-589
2	6-18-87	QC/LS	OBsolete 1-2, 1-4, 1-6 PER CM-895 AND REV PER CM-503
3	1-23-88	MS/RS	REVISE PER CM-1821
4	7-23-91	MS/RS	REV PER CM-3430
5	12-21-95	MS/RS	REV PER CM-3603
6	11-93	MS/RS	OB S 1-9 PER CM 2708

1. MATES WITH CAP PART NUMBER 480305.
 2. ACCEPTS MATE-N-LOK SOCKET CONTACTS.
 3. RECOMMENDED PANEL THICKNESS .025-.065.
 4. BOTH LOCKING LEGS TO BE SQUEEZED TOGETHER AND HOUSING TO BE INSERTED "STRAIGHT-IN" AS OPPOSED TO A ROCKING MANNER OF INSERTION.
 5. PANEL MUST BE PUNCHED SO THAT THE HOUSING ENTERS THE PANEL IN THE SAME DIRECTION AS THE PUNCH.
 6. DIMENSIONS A AND B TO BE EQUAL WITHIN .005.
 7. PANEL MUST NOT HAVE ANY MATERIAL (PAINT, PORCELAIN, ETC.) APPLIED IN THE MOUNTING HOLE AREA THAT WOULD DECREASE RETENTION OF THE HOUSING IN THE PANEL.
- IF NOTES 5 AND/OR 7 ARE NOT COMPLIED WITH, THE .890 DIMENSION SHOULD BE REDUCED TO .880 TO ASSURE PROPER HOUSING RETENTION IN THE PANEL.

UNLESS OTHERWISE SPECIFIED, DIMENSIONS ARE IN INCHES. TOLERANCES ± .010 ANGLES ± .010		CONTRACT NO. AMP 5-30-86	
MATERIAL		DR. W. J. Smith	DATE 6-3-86
FINISH		CHK. W. J. Smith	DATE 6-3-86
OTHER APPRO		APPD. M. Smith	DATE 6-3-86
SCALE 5:1		NAME AMP INCORPORATED PHILADELPHIA, PA. 19103	
SIZE D	FSCM NO. 00779	DRAWING NO. 480304	
MATERIAL NATURAL NYLON, UL 94V-2		PART NO. 1-480304-0	
COLOR		MATE-N-LOK™	
FINISH		PLUG,	
OTHER APPRO		3 CIRCUIT,	
SCALE 5:1		MATE-N-LOK™	

CUSTOMER DRAWING